

EGANSTREET RAMPS UP EXPLORATION CAMPAIGN TO INCREASE INVENTORY AT ROTHSAY GOLD PROJECT IN WA

Pre-Feasibility Study on track to be delivered this quarter

HIGHLIGHTS

- > Multi-pronged exploration campaign underway to grow the current 262,000 ounce¹ high-grade Resource inventory at the Rothsay gold project in WA's Midwest.
- > Ground magnetic survey underway to test for potential cross structures to aid in establishing drilling targets within the repeat shear(s).
- > Reverse Circulation drilling programme to commence in the coming weeks to test for extensions to the northern upper zone of the "A" Shear which hosts the existing Resource.
- > Second diamond drilling programme completed at Rothsay to in-fill parts of the current Inferred Resource and test for down-plunge extensions of the "A" Shear to the north.
- > Assay results from this drilling will be finalised once geotechnical testing, required for the Definitive Feasibility Study (DFS), has been completed.
- > The recent drilling intersected a 0.75m wide quartz vein with visible gold ~250m east of the "A" Shear in a potential parallel position that will require follow-up.
- > Rothsay land-holding has substantially increased with the grant of a key exploration tenement.
- > Scoping Study to be expanded into a Pre-Feasibility Study (PFS), which is due for completion in the current quarter.

Egan Street Resources Limited (ASX: EGA) (EganStreet or the Company) is pleased to announce a multi-pronged strategy to grow the current 262,000-ounce¹ high-grade Resource at its 100%-owned Rothsay Gold Project in WA's Midwest region.

The campaign is aimed at both extending the known mineralisation of the "A" Shear in near-surface positions immediately to the north of the deposit and identifying potential repeats of high-grade mineralisation known to occur within multiple parallel shear zones adjacent to the "A" Shear, which hosts the current resource. This work has been planned as a result of an ongoing exploration review of the Rothsay field which has highlighted the potential for further gold mineralisation, supported by the recent identification of historical gold workings along the strike of interpreted mineralised shears, where basement geology is exposed at the surface.

¹ The Rothsay Project currently hosts high-grade Mineral Resources of 262koz at an average grade of 11.6 g/t Au (Indicated 399kt @ 11.9g/t Au and Inferred 303kt @ 11.3g/t Au) and a production target (Scoping Study published 23 December 2016) of 493kt @ 6.7g/t for 101koz of gold produced.

An extensive ground magnetic survey has already commenced and a Reverse Circulation (RC) drilling programme will commence within weeks to test for extensions to the northern upper zone of the "A" Shear. This area has had very limited previous drilling and has not been fully tested.

This programme will coincide with the arrival of assays from the recently-completed second diamond drilling programme which tested for extensions to the known "A" Shear mineralisation down-plunge to the north and in-filled part of the current Inferred Resource.

Diamond drill core from this programme has been dispatched for geotechnical testing as part of the ongoing Definitive Feasibility Study of the Rothsay Gold Project. Assays from the recent programme will be completed once the geotechnical testwork programme has been finalised.

The expanded exploration programme comes as EganStreet moves to extend the Rothsay Scoping Study to a Pre-Feasibility Study.

This decision was taken in light of the strong results emerging from the expanded Scoping Study foreshadowed in recent announcements. By completing the extra work required as part of a Pre-Feasibility Study, EganStreet will be able to provide a strong foundation for the Company's plans to develop a high-grade gold operation at Rothsay.

The results of the Pre-Feasibility Study will be published later this quarter.

EganStreet Managing Director Marc Ducler said the momentum at Rothsay was building rapidly, with both development studies and an aggressive exploration campaign now in full swing.

"The outstanding results from the initial Scoping Study, combined with the success of our recent drilling programmes and the resource upgrade announced last month, have laid the foundations for a Pre-Feasibility Study level of assessment of the Rothsay Project," Mr Ducler said.

"We are on track to publish a PFS later this quarter, with the results to feed directly into a Definitive Feasibility Study due in the second half of the year."

"In parallel with this, we are also increasing our exploration activities at Rothsay with a view to growing the gold inventory and unlocking the broader potential of the project, which is highly prospective for new discoveries along parallel shear zones."

"A key focus of our upcoming exploration will also be shallow RC drilling to test the near-surface position immediately north of the deposit, where there is excellent potential to add to the resource."

"Investors in EganStreet stand to benefit substantially as we establish the economic and technical strengths of Rothsay at the same time as we grow the inventory," Mr Ducler added.

"This strategy is aimed at demonstrating a clear pathway to production and cash-flow while also capitalising on the market's appetite for companies with scale and exploration upside. EganStreet is ideally placed to meet all these criteria."

GROUND MAGNETIC SURVEY

A detailed 25 metre spaced ground magnetic survey over the Rothsay Mining Leases is underway, with results and subsequent interpretation due next month.

This detailed ground magnetic survey is being undertaken to enhance the understanding of geological structures that localise gold mineralisation and identify potential cross structures. This will aid in establishing drilling targets on the remainder of "A" Shear, as well as the untested "B", "C", "D" and "E" Shears. Cross structures are considered significant in concentrating the gold mineralisation based on observations within the current "A" Shear Mineral Resource.

Once the results and interpretation of the magnetic survey have been received, the Company plans to conduct RC drilling, based on the magnetic survey data, targeting repeat "A" Shear style mineralisation on the 10km strike length of largely untested shears contained within the mining tenements at the Rothsay Gold Project.

There are numerous historical workings dating from the 1890's that are evident along these largely untested shears, where there is no overlying alluvial cover. The historical workings are not deep (less than 30m), presumably owing to challenges associated with deep underground mining in that era.

The presence of such abundant workings demonstrates that the development of gold mineralisation has taken place at numerous positions along the prospective shears. The aim of these additional exploration activities is to demonstrate that repeated mineralisation of the scale contained within the current Rothsay Mineral Resource Estimate may be hosted elsewhere within the Rothsay mining tenement package.

RC DRILL PROGRAMME

An RC drilling programme is due to commence in the coming weeks, part of which has been designed to test the upper northern zone of the "A" Shear down to 100m below surface (see Figure 1).

This target zone has been largely untested and 16 holes have been designed for 1,700m. A further 1,500m will be drilled to follow up shallow intercepts in the south and a further 2,000m to test the up-dip shallow portions of the hangingwall shears where infrastructure is planned.

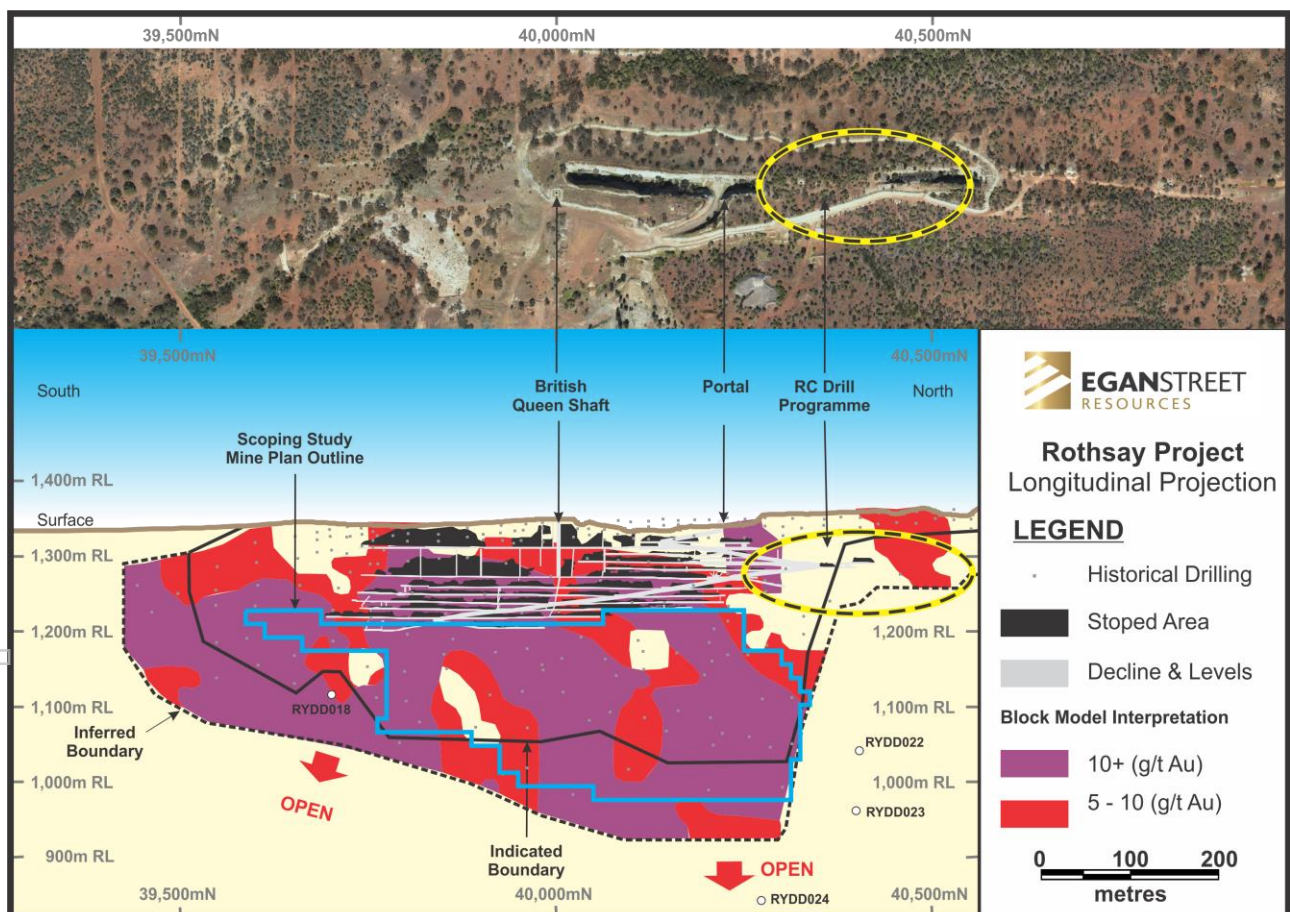


FIGURE 1 – "A" SHEAR LONG PROJECTION SHOWING RECENTLY COMPLETED DIAMOND DRILL INTERCEPTS & UPCOMING RC DRILL PROGRAMME.

DIAMOND DRILL PROGRAMME

The second diamond drilling programme has now been completed at the Rothsay Project. The first hole, RYDD018, was designed to in-fill the drill spacing and enable a portion of the resource to be upgraded from Inferred to Indicated. This hole intersected 0.35m of the "A" Shear style mineralisation.

The remaining three holes were drilled in the north to test the down-plunge extent of the mineralisation. RYDD022 and RYDD023 were drilled approximately 100m north of the current resource boundary while RYDD024 was drilled approximately 130m below the resource boundary (see Figure 1).

All holes intersected the "A" Shear position with RYDD022 and RYDD024 producing a narrow quartz vein within a zone of increased sulphides while RYDD023 intersected strong actinolite/tremolite alteration.

The stratigraphy in this area appears to have steepened and regional interpretation from previous magnetics and ground mapping also indicates the presence of a cross-cutting structure through this area.

RYDD024 also intersected 0.75m of mineralised quartz vein with visible gold 200m down-hole. This intersection is approximately 250m east of the "A" Shear, in a position not previously identified as being prospective for gold, and will require further investigation. Ground follow-up has identified a shallow working at the surface, interpreted to be directly up-dip of this intersection.

Selected "A" Shear drill core has been collected and sent for geotechnical testing, the results of which are required for the completion of the Definitive Feasibility Study. Results will be finalised once this geotechnical test work is completed and sent for assay.

LITHOLOGY REVIEW

During late March a drill core assessment was undertaken by a structural geological consultant. The aim of this exercise was to refine and standardise stratigraphy as well as characterising ore type and alteration within the "A" Shear and footwall/hangingwall zones.

Over 30 "A" Shear core intersections were reviewed and lineation's collected from the core to help in defining future drilling targets. This work will be ongoing and an initial report is expected in the coming weeks.

GRANTED EXPLORATION TENEMENT

EganStreet has recently been granted the exploration tenement E59/2183 by the Department of Mines & Petroleum. The tenement has been granted for a period of five years, and can be extended for a further five years.

The tenement surrounds the two Mining Leases held by the Company and offers additional exploration upside in potential targets located along strike. The tenement covers an area of 50.8 km², increasing the Company's total ground-holding at Rothsay to 69.4km².

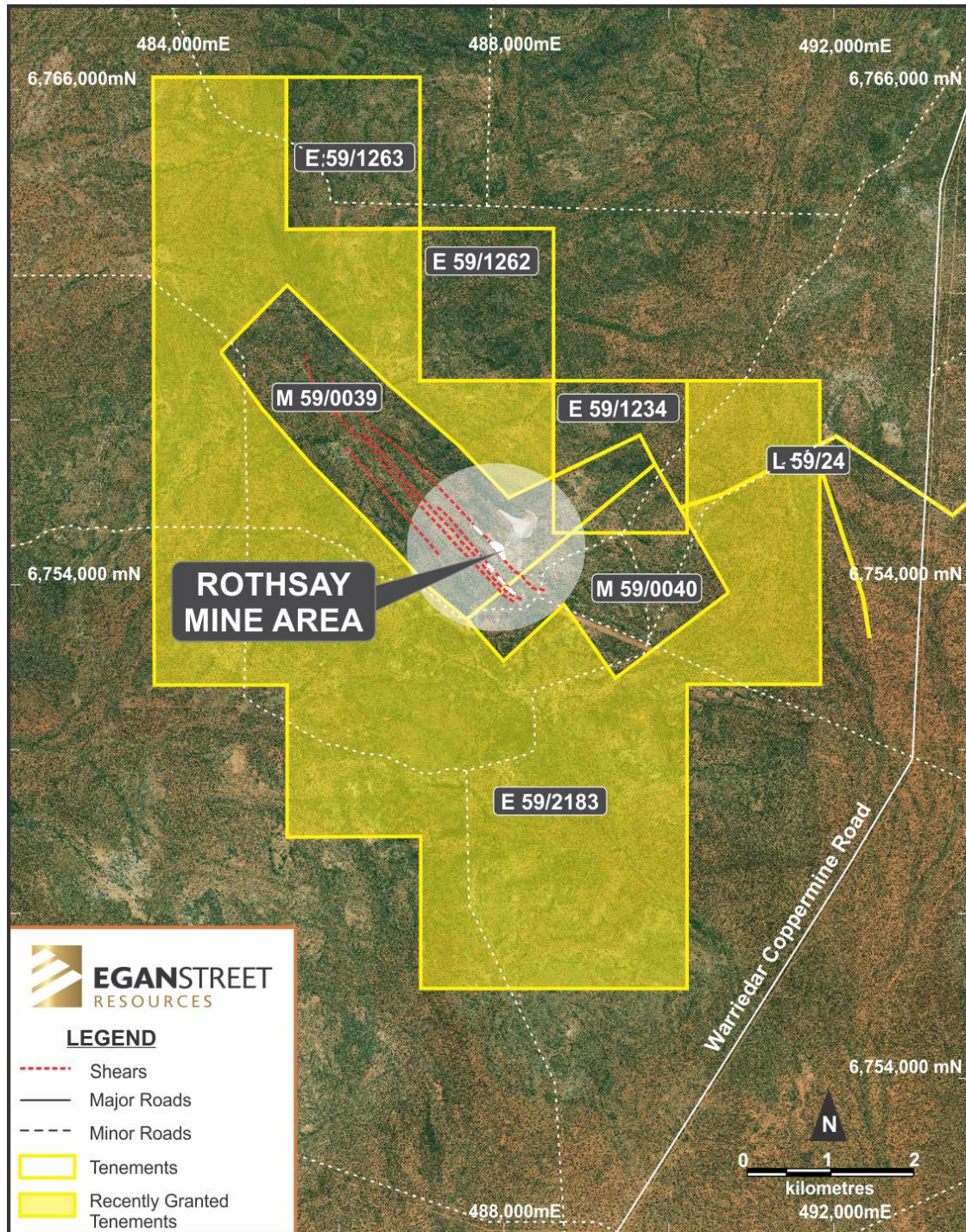


FIGURE 2 – EGANSTREET TENEMENT HOLDINGS AT ROTHSAI

PRE-FEASIBILITY STUDY

EganStreet is currently working towards completing a Pre-Feasibility Study on the Rothsay Gold Project. The decision to proceed to a PFS was taken in light of the outstanding results from the initial Scoping Study, combined with the success of recent drilling programmes and the resource upgrade. It was originally intended to complete an expanded Scoping Study as foreshadowed in recent announcements. However, completing this work to a PFS level of detail lays a foundation for rapid progression to a Definitive Feasibility Study later in the year. The PFS is due to be released later this quarter. Additional work has also commenced which, in addition to the PFS, will form the basis for the DFS for the Rothsay Gold Project, due for delivery later this year.

For more information, please contact:

Investors:

Marc Ducler, Managing Director

T. 08 6424 8130

E. info@eganstreet.com.au

Media:

Nicholas Read, Read Corporate

T. 08 9388 1474

E. nicholas@readcorporate.com.au

ABOUT EGANSTREET RESOURCES

EganStreet is an emerging West Australian gold company which is focussed on the exploration and development of the 100%-owned Rothsay Gold Project, located 300km north-east of Perth in WA's Midwest region.

The Rothsay Project currently hosts high-grade Mineral Resources of 262koz at an average grade of 11.6 g/t Au (Indicated 399kt @ 11.9g/t Au and Inferred 303kt @ 11.3g/t Au) and a production target (Scoping Study published 23 December 2016) of 493kt @ 6.7g/t for 101koz of gold produced.

The Company is focussed on increasing the geological confidence of the Mineral Resource, expanding the known mineralisation and carrying out the necessary evaluation, modelling and feasibility studies to progress a potential near-term, low capital intensity opportunity to commence mine development and gold production operations.

A Pre-Feasibility Study is targeted for completion in the second quarter of 2017 and will feed into the Definitive Feasibility Study of the Rothsay Gold Project, which is due for completion in the second half of this year.

EganStreet has a strong Board and Management team which has the necessary range of technical and commercial skills to progress the Rothsay Gold Project to production.

The Company is funded to progress the Rothsay Gold Project to a decision to mine (technical and commercial studies completed, funding secured and key construction, mining and processing contracts in place).

EganStreet's longer term growth aspirations are based on a strategy of utilising the cash-flow generated by an initial mining operation at Rothsay to target extensions of the main deposit and explore the surrounding tenements, which include a 10km strike length of highly prospective and virtually unexplored stratigraphy.

APPENDIX 1 - COMPETENT PERSON'S STATEMENT

The information in this report that relates to Exploration Results is based on and fairly represents information and supporting documentation compiled by Ms Julie Reid, a Competent Person who is a Member of The Australasian Institute of Mining and Metallurgy. Ms Reid is a full-time employee of the Company. Ms Reid has sufficient experience relevant to the style of mineralisation and type of deposit under consideration and to the activity being undertaking to qualify as a Competent Person as defined in the 2012 Edition of the 'Australasian Code for Reporting of Exploration Results, Mineral Resources and Ore Reserves'. Ms Reid consents to the inclusion in the report of the matters based on his information in the form and context in which it appears.

The information in this announcement that relates to the Rothsay Mineral Resource is extracted from the announcement titled "27% Increase in High-Grade Indicated Resource at Rothsay" lodged on 14 March 2017 which is available to view at www.eganstreetresources.com.au / www.asx.com.au. The Company confirms that it is not aware of any new information or data that materially affects the information included in the original market announcement and that all material assumptions and technical parameters underpinning the Mineral Resource estimate continue to apply and have not materially changed. The Company confirms that the form and context in which the Competent Person's findings are presented have not been materially modified from the original market announcement.

Information in relation to the Rothsay Project Scoping Study, including production targets and financial information, included in this report is extracted from an ASX Announcement dated 23 December 2016 (see ASX Announcement – 23 December 2016, "Rothsay Scoping Study Revised", www.eganstreetresources.com.au and www.asx.com.au). The Company confirms that all material assumptions underpinning the production target and financial information set out in the announcement released on 23 December 2016 continue to apply and have not materially changed.

APPENDIX 2 - FORWARD LOOKING STATEMENTS & DISCLAIMERS

This announcement includes forward-looking statements that are only predictions and are subject to risks, uncertainties and assumptions, which are outside the control of EganStreet.

Actual values, results, interpretations or events may be materially different to those expressed or implied in this announcement. Given these uncertainties, recipients are cautioned not to place reliance on forward-looking statements in the announcement as they speak only at the date of issue of this announcement. Subject to any continuing obligations under applicable law and ASX Listing Rules, EganStreet does not undertake any obligation to update or revise any information or any of the forward-looking statements in this announcement or any changes in events, conditions or circumstances on which any such forward-looking statement is based.

This announcement has been prepared by EganStreet. The document contains background information about EganStreet current at the date of this announcement. The announcement is in summary form and does not purport to be all-inclusive or complete.

Recipients should conduct their own investigations and perform their own analysis in order to satisfy themselves as to the accuracy and completeness of the information, statements and opinions contained in this announcement.

The announcement is for information purposes only. Neither this announcement nor the information contained in it constitutes an offer, invitation, solicitation or recommendation in relation to the purchase or sale of shares in any jurisdiction. The announcement may not be distributed in any jurisdiction except in accordance with the legal requirements applicable in such jurisdiction. Recipients should inform themselves of the restrictions that apply to their own jurisdiction as a failure to do so may result in a violation of securities laws in such jurisdiction.

This announcement does not constitute investment advice and has been prepared without considering the recipient's investment objectives, financial circumstances or particular needs and the opinions and recommendations in this announcement are not intended to represent recommendations of particular investments to particular persons.

Recipients should seek professional advice when deciding if an investment is appropriate. All securities transactions involve risks, which include (among others) the risk of adverse or unanticipated market, financial or political developments. To the fullest extent of the law, EganStreet, its officers, employees, agents and advisers do not make any representation or warranty, express or implied, as to the currency, accuracy, reliability or completeness of any information, statements, opinion, estimates, forecasts or other representations contained in this announcement. No responsibility for any errors or omissions from the announcement arising out of negligence or otherwise is accepted.

APPENDIX 3 - DRILL DATA TABLES

TABLE 1 – COLLAR CO-ORDINATE DETAILS

Hole ID	Type	End of Hole Depth (m)	GDA (North)	GDA (East)	mRL	Dip	MGA Azimuth
RDY0018	Diamond	288.3	6,760,258	488,410	346.3	-60.7	227
RDY0022	Diamond	387.9	6,760,819	488,980	380.5	-69.2	227
RDY0023	Diamond	450.0	6,760,820	487,981	380.6	-75.3	227
RDY0024	Diamond	560.1	6,760,748	488,090	372.5	-79.1	227

APPENDIX 4 - JORC CODE, 2012 EDITION –TABLE 1 REPORT

SECTION 1 SAMPLING TECHNIQUES AND DATA

(Criteria in this section apply to all succeeding sections.)

CRITERIA	JORC CODE EXPLANATION	COMMENTARY
Sampling techniques	Nature and quality of sampling (e.g. cut channels, random chips, or specific specialised industry standard measurement tools appropriate to the minerals under investigation, such as down hole gamma sondes, or handheld XRF instruments, etc.). These examples should not be taken as limiting the broad meaning of sampling	All core was orientated, logged geologically and marked up for assay at a maximum sample interval of 1.2 metres constrained by geological boundaries. Drill core is cut in half by a diamond saw and half NQ core samples submitted for assay analysis. Samples taken in the HQ core were halved and the halved again so a quarter core sample was taken where the sample length was over 0.5m. All diamond core is stored in industry standard core trays labelled with the drill hole ID and core interval.
	Include reference to measures taken to ensure sample representation and the appropriate calibration of any measurement tools or systems used.	Sampling was carried out under EganStreet's protocols and QAQC procedures as per industry best practice. See further details below. There is a lack of detailed information available pertaining to QAQC practices prior to 2012.
	Aspects of the determination of mineralisation that are Material to the Public Report. In cases where 'industry standard' work has been done this would be relatively simple (e.g. 'reverse circulation drilling was used to obtain 1 m samples from which 3 kg was pulverised to produce a 30 g charge for fire assay'). In other cases more explanation may be required, such as where there is coarse gold that has inherent sampling problems. Unusual commodities or mineralisation types (e.g. submarine nodules) may warrant disclosure of detailed information.	The project has been sampled using industry standard diamond drilling techniques. Diamond (DDH) drilling at Rothsay used HQ and NQ2 sizes. Down hole surveying has been undertaken using single shot cameras whilst drilling and gyroscopic instrumentation once hole completed. <u>Historical Drilling:</u> Several generations of drilling have been undertaken and historic data gathered by a number of owners since the 1980s. There is a lack of detailed information available pertaining to the equipment used, sample techniques, sample sizes, sample preparation and assaying methods used to generate these data sets. Down hole surveying of the drilling where documented has been undertaken using Eastman single shot cameras (in some of the historic drilling) and magnetic multi-shot tools and gyroscopic instrumentation (ARL). RC samples were predominantly collected as 1m samples. The Rothsay data set contains diamond core samples that are selectively collected according to geological boundaries and sample lengths vary between 0.1-1.2m.
Drilling techniques	Drill type (e.g. core, reverse circulation, open-hole hammer, rotary air blast, auger, Bangka, sonic, etc.) and details (e.g. core diameter, triple or standard tube, depth of diamond tails, face-sampling bit or other type, whether core is oriented and if so, by what method, etc.).	Diamond drilling was used to test the Rothsay deposit. DDH holes were cored from surface using either rock roll methods, PQ or HQ. This was changed to NQ2 when ground conditions were competent. The rock roll and PQ portions of the drill hole were not collected or sampled. <u>Historical Drilling:</u> Majority of this drilling is DD (194 holes) and RC (189 holes). A number of the historical DD holes have been used to produce multiple mineralised intersections using diamond wedge techniques. Diamond core is not orientated. The age of the RC drilling late 1980s to 2009 suggests that it would be face sampling hammer technique, however this is not documented in the database. Additionally, the database contains 314 percussion holes PER (MRP prefixed) presumed to be open hole hammer type drilled by Metana in the early 1990s and 181 rotary air blast RAB holes (RR, RRAB and RRB prefixed) drilled by Hunter Exploration in the late 1990s.

Drill sample recovery	<p>Method of recording and assessing core and chip sample recoveries and results assessed</p>	<p>Diamond core recoveries were recorded as a percentage of the measured core vs the drilling interval. Core loss locations were recorded on core blocks by the drilling crew. Diamond core was reconstructed into continuous runs where possible and metres checked against the depth as recorded on core blocks by the drilling crew.</p> <p><u>Historical Drilling:</u> Harris, 2002 reports that excellent drilling conditions were encountered throughout the Thundelarra programme of 5 DD holes with 100% core recovery in hanging and foot wall rocks. RQD was calculated from the total length of all core pieces greater than 10cm per core run and expressed as a percentage of the core run length. Hanging wall ultramafic rocks demonstrated an RQD in the range 90-97%, footwall dolerite rocks in the range 60-86%. Drillers measure core recoveries for every drill run completed using three and six metre core barrels. The core recovered is physically measured by tape measure and the length recovered is recorded for every three metre "run". Core recovery can be calculated as a percentage recovery. Almost 100% recoveries were achieved. RC samples were collected to industry standards of the day.</p>
	<p>Measures taken to maximise sample recovery and ensure representative nature of the samples.</p>	<p>DDH drilling collects uncontaminated fresh core samples which are cleaned at the drill site to remove drilling fluids and cuttings to present clean core for logging and sampling. RC: RC face-sample bits and dust suppression were used to minimise sample loss. Drilling airlifted the water column above the bottom of the hole to ensure dry sampling. RC samples are collected through a cyclone and cone splitter, the rejects deposited in a plastic bag, and the samples for the lab collected to a total mass optimised to ensure full sample pulverisation (2.5 to 4 kg).</p>
	<p>Whether a relationship exists between sample recovery and grade and whether sample bias may have occurred due to preferential loss/gain of fine/coarse material.</p>	<p>There is no significant loss of material reported in any of the DDH core.</p> <p><u>Historical Drilling:</u> No assessment has been made of the relationship between recovery and grade. DDH: Except for the top of the hole, while drilling through weathered material (35m maximum), there is no evidence of excessive loss of material and at this stage no information is available regarding possible bias due to sample loss. DDH: There is no significant loss of material reported in any of the pre-2016 DDH core.</p>
Logging	<p>Whether core and chip samples have been geologically and geotechnically logged to a level of detail to support appropriate Mineral Resource estimation, mining studies and metallurgical studies.</p>	<p>Diamond drill core was geologically logged for the total length of the hole using a graphic logging method. All core was photographed and images are stored in the company database. Logging routinely recorded, RQD, weathering, lithology, mineralogy, mineralisation, structure, alteration and veining. Logs were coded using the company geological coding legend and entered into the company database.</p> <p><u>Historical Drilling:</u> All chips and drill core were geologically logged by company or contracted geologists, using their current company logging scheme. The majority of holes (80%+) within the mineralised intervals have lithology information which has provided sufficient detail to enable reliable interpretation of wireframe. The logging is qualitative in nature, describing oxidation state, grain size, an assignment of lithology code and stratigraphy code by geological interval. The 2012 Auricup diamond drill holes were geologically logged in their entirety and photographed. Diamond drilling was logged for geotechnical purposes. Logging was at an appropriate detailed quantitative standard to support future geological, resource, reserve estimations and technical/economic studies. All drill core and chip trays are stored at the companies Perenjori yard.</p>

	<p>Whether logging is qualitative or quantitative in nature. Core (or costean, channel, etc.) photography.</p>	<p>All core was photographed in the cores trays, with individual photographs taken of each tray both dry, and wet, and photos uploaded to the EganStreet Server.</p> <p><u>Historical Drilling:</u> RC: Logging of RC chips records lithology, mineralogy, mineralisation, weathering, colour and other features of the samples. All samples are wet-sieved and stored in a chip tray. DDH: Logging of DDH core records lithology, mineralogy, mineralisation, weathering, colour and other features of the samples, and structural information from oriented drill core. Older pre-2016 core has been variously photographed and are copied onto the EganStreet server for reference.</p>
	<p>The total length and percentage of the relevant intersections logged</p>	<p>All DDH holes were logged in full.</p>
	<p>If core, whether cut or sawn and whether quarter, half or all core taken.</p>	<p>Recent core samples were cut in half using an Almonte diamond saw. Half core samples were collected for assay, and the remaining half core samples stored in the core trays. Some HQ samples were quarter cored.</p> <ul style="list-style-type: none"> Very little, readily available documentation of the sampling procedures for historic drilling are available. Where reports have been reviewed (Turley, 2001 and Harris, 2002) it appears that NQ quarter core has been sawn for sampling.
	<p>If non-core, whether riffled, tube sampled, rotary split, etc. and whether sampled wet or dry.</p>	<p>Diamond holes only were drilled, however where the rock roll or PQ was used for pre-collars these were discarded and not sampled.</p> <p><u>Historical Drilling:</u> No documentation of the sampling of RC chips is available for the Metana or Hunter Exploration drilling. 2012 RC drilling collected 1 metre RC drill samples that were channelled through a rotary cone-splitter, installed directly below a rig mounted cyclone, and an average 2-3 kg sample is collected in pre-numbered calico bags, and positioned on top of the plastic bag. All samples were dry.</p>
<p>Sub-sampling techniques and sample preparation</p>	<p>For all sample types, the nature, quality and appropriateness of the sample preparation technique.</p>	<p>Samples were prepared at the MinAnalytical Laboratory in Perth. Samples were dried, and the whole sample pulverised to 80% passing 75um, and a sub-sample of approx. 200 g retained. A nominal 50 g was used for the gold analysis. The procedure is industry standard for this type of sample.</p> <p><u>Historical Drilling:</u> Unable to comment with any certainty on the quality control procedures for sub-sampling for the pre-2012 drilling. The 2012 Auricup samples were prepared at the Genalysis Laboratory in Perth. Samples were dried, and the whole sample pulverised to 80% passing 75um, and a sub-sample of approx. 200 g retained. A nominal 50 g was used for the gold analysis.</p>
	<p>Quality control procedures adopted for all sub-sampling stages to maximise representation of samples.</p>	<p>Diamond core was sawn with a diamond saw and half core samples taken for assay. At the laboratory, regular Repeats and Lab Check samples are assayed.</p> <ul style="list-style-type: none"> Unable to comment with any certainty on the quality control procedures for sub-sampling for the pre-2016 drilling.
	<p>Measures taken to ensure that the sampling is representative of the in situ material collected, including for instance results for field duplicate/second-half sampling.</p>	<p>The sampling techniques for collection of the sample to be submitted to the assay facility for diamond drilling are of consistent quality and appropriate. During drilling and sampling operations, EganStreet had on site, technically competent supervision and procedures in place to ensure sample preparation integrity and quality. No field duplicates were taken for diamond drilled samples.</p>

	<p>Whether sample sizes are appropriate to the grain size of the material being sampled.</p>	<p>The sample sizes are considered appropriate for the diamond core sampling.</p> <ul style="list-style-type: none"> Are unable to comment on the appropriateness of sample sizes to grain size on pre-2012 data as no petrographic studies have been undertaken. Sample sizes are considered appropriate to give an indication of mineralisation given the particle size and the preference to keep the sample weight below a targeted 3kg mass which is the optimal weight to ensure requisite grind size in the LM5 sample mills used by the relevant Laboratories in sample preparation
	<p>The nature, quality and appropriateness of the assaying and laboratory procedures used and whether the technique is considered partial or total.</p>	<p>Samples were analysed at the MinAnalytical Laboratory in Perth. The analytical method used was a 50 g Fire Assay for gold only and a Four Acid Digest Multi Element (34 element) assay on all "H" and "A" shear samples. This is considered to be appropriate for the material and mineralization</p> <ul style="list-style-type: none"> A review of the QAQC data from the most recent ARL(Auricup) drilling programmes for the 2013 mineral resource update was conducted by Mining Plus Pty Ltd as documented in Sulaiman 2013. This involved assessment of internal standards and of external standards, blanks, laboratory replicates and check samples.
<p>Quality of assay data and laboratory tests</p>	<p>For geophysical tools, spectrometers, handheld XRF instruments, etc., the parameters used in determining the analysis including instrument make and model, reading times, calibrations factors applied and their derivation, etc.</p> <p>Nature of quality control procedures adopted (e.g. standards, blanks, duplicates, external laboratory checks) and whether acceptable levels of accuracy (i.e. lack of bias) and precision have been established.</p> <p>The verification of significant intersections by either independent or alternative company personnel.</p>	<p>N/A</p> <p>Data quality for EganStreet diamond drill holes are good and conform to normal industry practices. Protocol for DDH programmes is for Field Standards (Certified Reference Materials) and Blanks inserted at a rate of 5 Standards and 5 Blanks per 100 samples. Results of the Field and Lab QAQC are checked on assay receipt using QAQCR software. All assays passed QAQC protocols, showing no levels of contamination or sample bias.</p> <ul style="list-style-type: none"> The recent ARL and EganStreet data integrity is accepted with a high level of confidence, however the historical drilling data could not be validated as there is insufficient or non-existent QAQC data. <p>Significant results were checked by the EganStreet Geology Manager and Executive Directors</p>
<p>Verification of sampling and assaying</p>	<p>The use of twinned holes.</p> <p>Documentation of primary data, data entry procedures, data verification, data storage (physical and electronic) protocols.</p> <p>Discuss any adjustment to assay data.</p>	<p>Twin holes were not employed during this part of the programme.</p> <p>All field logging is carried out on Toughbooks using excel templates. Logging data is submitted electronically to a Database Geologist in the Perth office. Assay files are received electronically from the Laboratory. All data is now stored in a Datashed database system, and maintained by Maxwell Geoscience.</p> <ul style="list-style-type: none"> Pre-2012 Data management and verification protocols are undocumented <p>No assay data was adjusted. The lab's primary Au field is the one used for plotting and resource purposes. No averaging is employed.</p>

Location of data points	Accuracy and quality of surveys used to locate drill holes (collar and down-hole surveys), trenches, mine workings and other locations used in Mineral Resource estimation.	For set-up the rig is aligned by surveyed marker pegs and compass check, and the drill rig mast is set up using a clinometer. Drillers use an electronic single-shot camera to take dip and azimuth readings inside the stainless-steel rods, at 30m intervals and a 5- 10m interval Gyro survey is conducted once the hole is drilled to depth. Drill hole collar locations were picked up by a qualified surveyor using DGPS (differential).
	Specification of the grid system used.	<u>Historical Drilling:</u> A total of 50 historical and SLR drill hole collars have been resurveyed and locations have been verified by ARL for the 2013 MRE by Sulaiman. The post 2010 drill hole collar locations were picked up by a qualified surveyor using DGPS (differential). Grid projection is GDA94, Zone 50.
	Quality and adequacy of topographic control.	Detailed surface control has been established by photogrammetry.
Data spacing and distribution	Data spacing for reporting of Exploration Results.	Primary: approximately 25m - 50 m on section by 25m - 50 m along strike.
	Whether the data spacing and distribution is sufficient to establish the degree of geological and grade continuity appropriate for the Mineral Resource and Ore Reserve estimation procedure(s) and classifications applied.	Drill spacing is approximately 25m (along strike) by 20m (on section) at shallow depths and from 50m by 50m to 100m x 100m at depth. This is considered adequate to establish both geological and grade continuity. Existing mine extents provide increased confidence in the geological continuity of the main mineralised structures.
Orientation of data in relation to geological structure	Whether the orientation of sampling achieves unbiased sampling of possible structures and the extent to which this is known, considering the deposit type.	The orientation of the drill holes is approximately perpendicular to the strike and dip of the targeted mineralisation and observed shearing.
	If the relationship between the drilling orientation and the orientation of key mineralised structures is considered to have introduced a sampling bias, this should be assessed and reported if material.	The orientation of the drill holes is approximately perpendicular to the strike and dip of the targeted mineralisation and contacts. No significant sampling bias has been introduced.
Sample security	The measures taken to ensure sample security.	DDH drilling pre-numbered calico sample bags were collected in polywoven bags (four calico bags per single polywoven bag), sealed, and transported by company transport to the MinAnalytical Laboratory in Perth.
Audits or reviews	The results of any audits or reviews of sampling techniques and data.	Sampling and assaying techniques are industry-standard. No specific audits or reviews have been undertaken at this stage in the programme.

SECTION 2 REPORTING OF EXPLORATION RESULTS

(Criteria listed in the preceding section also apply to this section.)

CRITERIA	JORC CODE EXPLANATION	COMMENTARY																																																
Mineral tenement and land tenure status	Type, reference name/number, location and ownership including agreements or material issues with third parties such as joint ventures, partnerships, overriding royalties, native title interests, historical sites, wilderness or national park and environmental settings.	<p>The drilling occurred within tenements M59/39 and M59/40, which are fully owned by Auricup (Rothsay) Pty Ltd which is a 100% owned subsidiary of Egan Street Resources Ltd. The Rothsay Townsite is located within the Mining tenements.</p> <table><tr><th>Tenement ID</th><th>Area km²</th><th>Status</th><th>Holder</th><th>Grant Date</th><th>Expiry Date</th></tr><tr><td>M59/39</td><td>7.097666</td><td>Live</td><td>Auricup (Rothsay) Pty Ltd</td><td>4/12/1986</td><td>3/12/2028</td></tr><tr><td>M59/40</td><td>3.805055</td><td>Live</td><td>Auricup (Rothsay) Pty Ltd</td><td>4/12/1986</td><td>3/12/2028</td></tr><tr><td>E59/2183</td><td>50.818482</td><td>Live</td><td>Auricup (Rothsay) Pty Ltd</td><td>24/02/2017</td><td>23/02/2022</td></tr><tr><td>L59/24</td><td>0.067596</td><td>Live</td><td>Auricup (Rothsay) Pty Ltd</td><td>22/08/1989</td><td>21/08/2019</td></tr><tr><td>E59/1234</td><td>1.637013</td><td>Live</td><td>Auricup (Rothsay) Pty Ltd</td><td>29/01/2007</td><td>9/08/2017</td></tr><tr><td>E59/1262</td><td>2.990164</td><td>Live</td><td>Auricup (Rothsay) Pty Ltd</td><td>10/08/2007</td><td>9/08/2017</td></tr><tr><td>E59/1263</td><td>2.990645</td><td>Live</td><td>Auricup (Rothsay) Pty Ltd</td><td>10/08/2007</td><td>9/08/2017</td></tr></table>	Tenement ID	Area km ²	Status	Holder	Grant Date	Expiry Date	M59/39	7.097666	Live	Auricup (Rothsay) Pty Ltd	4/12/1986	3/12/2028	M59/40	3.805055	Live	Auricup (Rothsay) Pty Ltd	4/12/1986	3/12/2028	E59/2183	50.818482	Live	Auricup (Rothsay) Pty Ltd	24/02/2017	23/02/2022	L59/24	0.067596	Live	Auricup (Rothsay) Pty Ltd	22/08/1989	21/08/2019	E59/1234	1.637013	Live	Auricup (Rothsay) Pty Ltd	29/01/2007	9/08/2017	E59/1262	2.990164	Live	Auricup (Rothsay) Pty Ltd	10/08/2007	9/08/2017	E59/1263	2.990645	Live	Auricup (Rothsay) Pty Ltd	10/08/2007	9/08/2017
	Tenement ID	Area km ²	Status	Holder	Grant Date	Expiry Date																																												
	M59/39	7.097666	Live	Auricup (Rothsay) Pty Ltd	4/12/1986	3/12/2028																																												
	M59/40	3.805055	Live	Auricup (Rothsay) Pty Ltd	4/12/1986	3/12/2028																																												
	E59/2183	50.818482	Live	Auricup (Rothsay) Pty Ltd	24/02/2017	23/02/2022																																												
	L59/24	0.067596	Live	Auricup (Rothsay) Pty Ltd	22/08/1989	21/08/2019																																												
	E59/1234	1.637013	Live	Auricup (Rothsay) Pty Ltd	29/01/2007	9/08/2017																																												
	E59/1262	2.990164	Live	Auricup (Rothsay) Pty Ltd	10/08/2007	9/08/2017																																												
E59/1263	2.990645	Live	Auricup (Rothsay) Pty Ltd	10/08/2007	9/08/2017																																													
	The security of the tenure held at the time of reporting along with any known impediments to obtaining a licence to operate in the area.	The tenements are in good standing with the Western Australian Department of Mines and Petroleum.																																																
Exploration done by other parties	Acknowledgment and appraisal of exploration by other parties.	<p>Numerous companies have previously explored the area. Gold was discovered by George Woodley in 1894 and a number of parties have explored and mined the area since then. In more recent times, Metana Minerals NL in joint venture with GENMIN mined and conducted drilling activities in the area from January 1989 until 1991. Hunter Exploration entered into a joint venture with Central West Gold in 1997 and completed a detailed geological mapping programme, rock chip sampling, lag sampling, RC and RAB drilling. The drilling successfully extended the strike length of the mineralisation along the “A” Shear by 250m to the south of the previously identified significant gold mineralisation (Tanner, 1997).</p> <p>In March 2000, Thundelarra entered into a joint venture agreement with the tenement holders, Central West Gold. In 2001-2002, Thundelarra and its joint venture partners Menzies Gold Ltd drilled 9 RC and 4 Diamond tails. In 2002-2003 United Gold (which subsequently became Royal Resources) acquired Thundelarra's 70% equity in the Project and completed further exploration activities and a mineral resource on the tenements. In November 2007 Silver Lake Resources listed on the Australian Stock Exchange and became the 100% owner of the Rothsay Gold Project. Silver Lake conducted an airborne EM programme targeting base metal sulphides. During 2008-2009 Silver Lake Resources completed site reconnaissance which included the re-establishment of the local grid, 4 Diamond holes and completion of an aerial topographical survey over the Project area.</p> <p>Auricup Resources Limited purchased the temements and drilled nine diamond core holes (RYDD001 to RYDD009) during March 2012 targeting the “A” Shear approximately 50 to 100m down dip and along strike from the existing mine workings. The most recent exploration undertaken by Auricup has included limited rock chip samples from the low grade stockpiles and from the upper levels of the underground mine and a review of more recent Airbourne survey data collected by the Geological Survey of Western Australia (“GSWA”). In addition, work was completed compiling and digitising historical mine and exploration records.</p>																																																

Deposit type, geological setting and style of mineralisation.

The Rothsay Gold Project is located 300 km N-NE of Perth and 70 km East of the wheat belt town of Perenjori. Gold was discovered at the Rothsay Gold Project in 1894 and has been partially exploited by shallow open-pits and underground mining techniques returning consistently high grade ore (+10g/t Au). Historic gold production totals an estimated 50,000oz and the project was last mined by Metana Minerals NL who ceased production in May 1991 after the gold price fell below US\$360/oz. Extensive underground development infrastructure from historical workings is in reasonable condition. The Rothsay Gold Mine is located within the Warriedar Greenstone gold belt, an Archaean sequence of mafic, ultra-mafic, meta-volcanic and sedimentary rocks folded in an anticlinal structure which plunges and strikes to the north-northwest with steeply dipping limbs. The western limb contains smaller scale anticlinal and synclinal folds and hosts the Rothsay and Mt Mulgine mineralization. Fields Find occurs on the eastern limb of the structure, which is truncated by a major post-tectonic granitoid intrusion to the south. The truncated southern portion of the sequence forms the Ningham-Retaliation fold belt in the extreme south. The deposit is hosted in three discrete areas and within five individual shear zones. "A" Shear and "H" Shear occur in one area, Shear "B" and Shear "C" occur in a second area and Shear "D" occurs as an isolated shear. The "A" Shear is located at the contact between serpentinitised peridotite and a porphyritic pyroxenite intrusive. The serpentinite forms the hanging wall unit. A sequence of mafic volcanic and sub-volcanic sills forms the hanging wall to the serpentinite. The "A" Shear is characterised by several generations of quartz veining with adjacent random tremolite alteration. The early quartz phase is typically blue-black due to the partial replacement of alumina by chromium oxide. The shear zone is typically two to five metres thick and mineralisation does not typically occur outside the shear zone. The main gold mineralization is associated with shear-hosted quartz veins which are parallel to bedding of the mafic and ultramafic sequence. The orebody is within veins of blue and white quartz of approximately 2.0m thickness and controlled by the basal contact of porphyritic metadolerites(poMD) and serpentinitised peridotite(SERP) that was subjected to intense tremolite alteration. The footwall poMD is relatively unaltered, while the hangingwall is strongly foliated SERP. Aeromagnetic surveys and geological mapping suggest that the ultramafic host rocks are truncated by granite that is mostly covered by lateritic duricrust.

Geology

Drill hole Information

A summary of all information material to the understanding of the exploration results including a tabulation of the following information for all Material drill holes: easting and northing of the drill hole collar elevation or RL (Reduced Level – elevation above sea level in metres) of the drill hole collar dip and azimuth of the hole down hole length and interception depth hole length
If the exclusion of this information is justified on the basis that the information is not Material and this exclusion does not detract from the understanding of the report, the Competent Person should clearly explain why this is the case.

Refer to Tables in the body of text.

Data aggregation methods

In reporting Exploration Results, weighting averaging techniques, maximum and/or minimum grade truncations (e.g. cutting of high grades) and cut-off grades are usually Material and should be stated.

Grades are reported as down-hole length-weighted averages of grades selected using geological and grade continuity criteria. Considerations included continuity of thickness, dip and strike, association with lithology and geological logging (weathering, lithology, structure, alteration, sulphides, veining), internal dilution (~1 to 2 m) and an approximated 0.5 to 1.0 g/t Au cut-off. No top cuts have been applied to the reporting of the assay results

	Where aggregate intercepts incorporate short lengths of high grade results and longer lengths of low grade results, the procedure used for such aggregation should be stated and some typical examples of such aggregations should be shown in detail.	Higher grade intervals are included in the reported grade intervals, individual assays > 5.0 g/t have been reported for each intersection.
Relationship between mineralisation widths and intercept lengths	These relationships are particularly important in the reporting of Exploration Results. If the geometry of the mineralisation with respect to the drill hole angle is known, its nature should be reported. If it is not known and only the down hole lengths are reported, there should be a clear statement to this effect (e.g. 'down hole length, true width not known').	Mineralised shear zones are north-northwest striking and steep to moderate east dipping. The general drill direction of -600 to 270 (local Grid) is approximately perpendicular to the shear zones and a suitable drilling direction to avoid directional biases. As a result reported intersections approximate, but are not, true width.
Diagrams	Appropriate maps and sections (with scales) and tabulations of intercepts should be included for any significant discovery being reported. These should include, but not be limited to a plan view of drill hole collar locations and appropriate sectional views.	Refer to Figures in the body of text for relevant plans
Balanced reporting	Where comprehensive reporting of all Exploration Results is not practicable, representative reporting of both low and high grades and/or widths should be practiced to avoid misleading reporting of Exploration Results.	All intersections reporting to the geological interpretation of the "A" Shear have been reported.
Other substantive exploration data	Other exploration data, if meaningful and material, should be reported including (but not limited to): geological observations; geophysical survey results; geochemical survey results; bulk samples – size and method of treatment; metallurgical test results; bulk density, groundwater, geotechnical and rock characteristics; potential deleterious or contaminating substances.	Drill hole location data are plotted on the Figures in the body of text.
Further work	The nature and scale of planned further work (e.g. tests for lateral extensions or depth extensions or large-scale step-out drilling). Diagrams clearly highlighting the areas of possible extensions, including the main geological interpretations and future drilling areas, provided this information is not commercially sensitive.	Further RC and diamond drilling is planned in the shallow weathered mineralisation to infill and test strike extents to the north and south of the prospect. Geological interpretation and modelling is ongoing and work on an updated resource for the Rothsay prospect